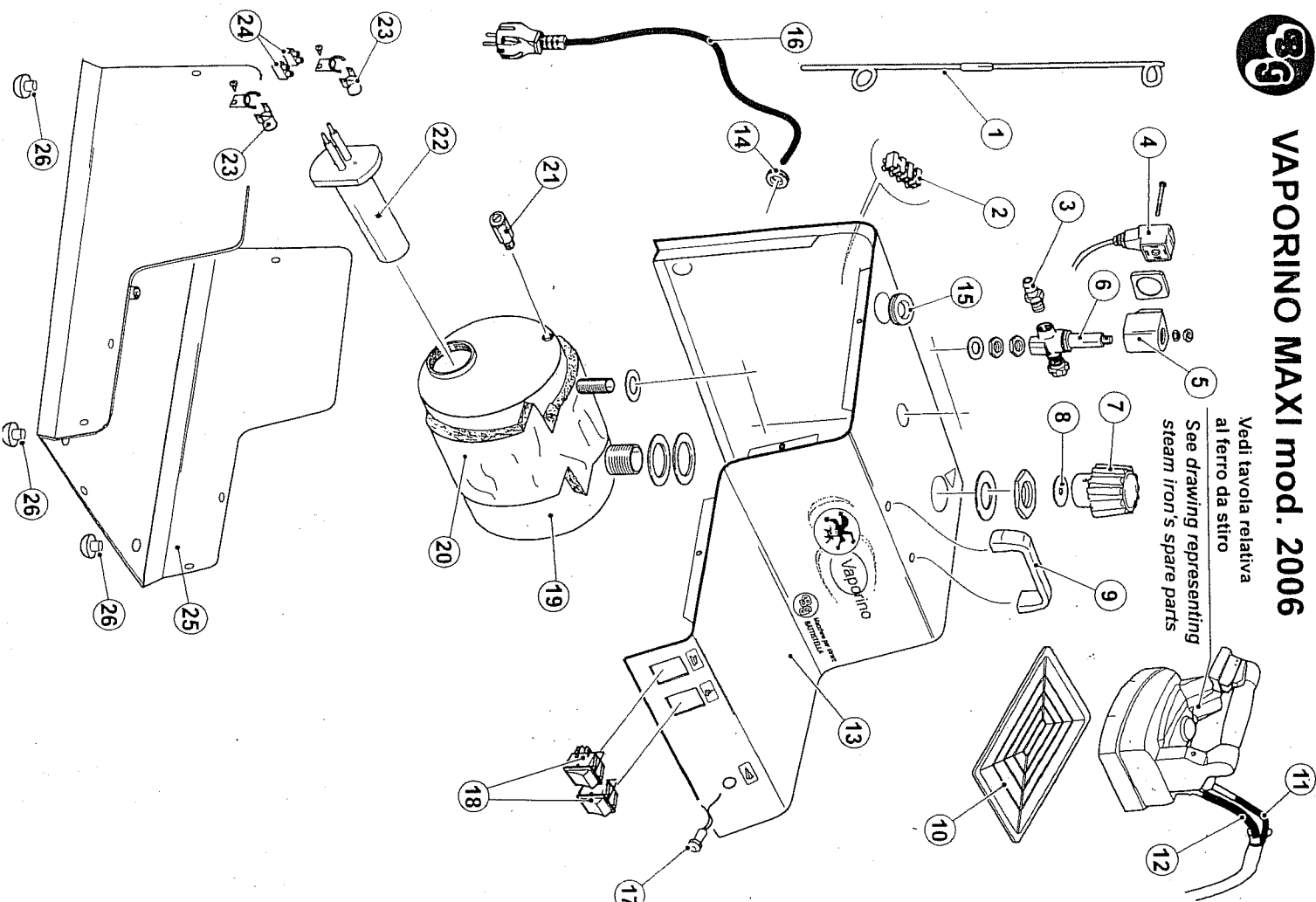




VAPORINO MAXI mod. 2006

Vedi tavola relativa
al ferro da stiro

See drawing representing
steam iron's spare parts



DESCRIZIONE COMPONENTI (DESCRIPTION OF COMPONENTS)

POS.	Q.TA'	DESCRIZIONE	DESCRIPTION
1	1	Antenna reggifilo	Cable support
2	1	Morsettera	Terminal board
3	1	Portagomma 1/4" M	Hose holder 1/4"
4	1	Connettore	Connector
5	1	Bobina	Coil
6	1	Gruppo valvola	Valve group
7	1	Tappo valvola di sicurezza 3/4"	Safety valve plug 3/4"
8	1	Guarnizione OR tappo 3/4"	Plug O-Ring 3/4"
9	1	Manico	Handle
10	1	Poggia ferro	Iron support
11	1	Cavo di alimentazione ferro	Electric cable for iron
12	1	Tubo vapore	Steam tube
13	1	Mascherina	Switchboard panel
14	1	Gommino medio	Rubber ring for wire
15	1	Gommino grande	Rubber ring for wire
16	1	Cavo elettrico	Electric cable
17	1	Lampadina spia	Pilot lamp
18	2	Interruttori luminosi 16 A	Luminous switches 16 A
19	1	Caldala	Boiler
20	1	Rivestimento caldala	Boiler cover/coating
21	1	Valvola di sicurezza 1/8" 5 Bar	Safety valve 1/8" 5 Bar
22	1	Resistenza caldala W 1000	Boiler resistance W 1000
23	2	Termostati 140° C	Thermostats 140° C
24	2	Morsetti	Clamps
25	1	Telajo	Frame/Metal sheet
26	4	Piedini in gomma	Rubber stoppers